

BSI TOWER

389 Chiswick High Road, LONDON, W4

Twelfth Floor Internal Area Plan

OFFICE 722.9 sq m 7782 sq ft

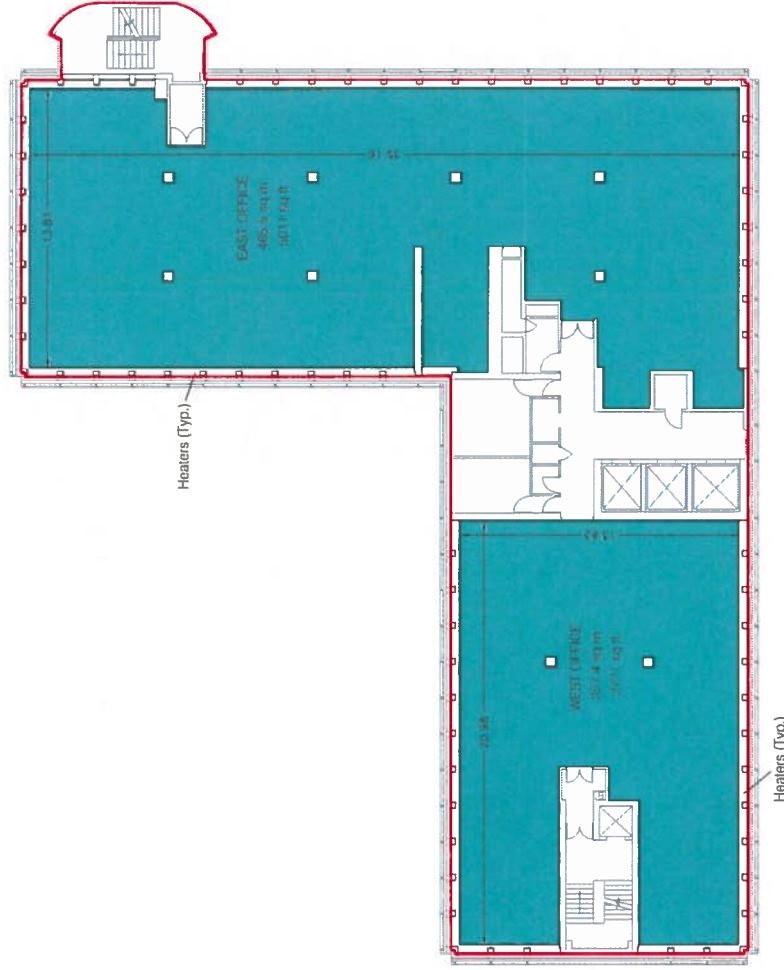
TOTAL AREA: 722.9 sq m 7782 sq ft

The following area has been EXCLUDED from the OFFICE Area:

Heaters 52.6 sq m 566 sq ft

GIA 974.0 sq m 10484 sq ft

CHISWICK HIGH ROAD



Revisions:
A - Original Issue (January 2010)
B -
C -
D -
E -
F -

Note:
This drawing complies with the 6th edition of the BRS code and indicates the extent of the areas quoted, produced to an accuracy commensurate with standard presentation scales. It is held in a scaled digital CAD format.

Condition of Site:
Occupied
Vacant
Heavy Fit-Out
Shell & Core
Under Construction
Cat A Fit-Out

Drawing No. 22701-BS-A12

Issue A January 2010

Scaled for presentation purposes

Plowman Craven

T +44(0)1582 765566 E info@plowmancraven.co.uk

F +44(0)1582 765370 W www.plowmancraven.co.uk